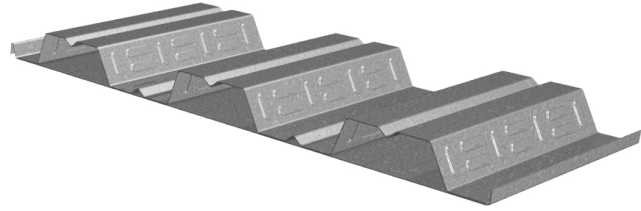


# 2VLP CELLULAR COMPOSITE DECK GRADE 50 STEEL

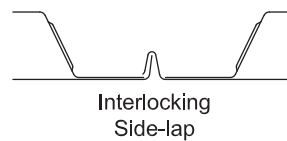
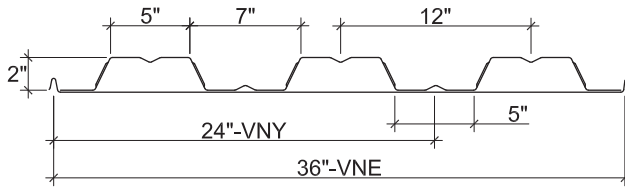
ASD

## 2VLP CELLULAR COMPOSITE DECK

- 2VLP Deck used with TSWs or BPs
- 2PLVLP Deck used with PunchLok® II System



## Nominal Dimensions



Plant	Cover Width
VNY	24"
VNE	36"

## Section Properties

Deck Gage	Deck Weight $w_{dd}$ (psf)	Base Metal Thickness $t$ (in.)	Yield Strength $F_y$ (ksi)	Effective Moment of Inertia at Service Load $I_d = (2I_e + I_g)/3$		Effective Section Modulus at $F_y = 50$ ksi		Allowable Moment		Vertical Web Shear $V_n/\Omega$ (lb/ft)
				$I_{d+}$ (in <sup>4</sup> /ft)	$I_{d-}$ (in <sup>4</sup> /ft)	$S_{e+}$ (in <sup>3</sup> /ft)	$S_{e-}$ (in <sup>3</sup> /ft)	$M_{n+}/\Omega$ (lb-ft/ft)	$M_{n-}/\Omega$ (lb-ft/ft)	
20/20	3.3	0.0358/0.0358	50	0.670	0.491	0.369	0.303	921	756	2419
20/18	3.8	0.0358/0.0474	50	0.714	0.526	0.378	0.341	943	851	2419
18/20	3.9	0.0474/0.0358	50	0.854	0.635	0.547	0.432	1365	1078	3240
18/18	4.4	0.0474/0.0474	50	0.914	0.675	0.556	0.469	1387	1170	3240
18/16	5.0	0.0474/0.0598	50	0.967	0.716	0.565	0.511	1410	1275	3240
16/18	5.0	0.0598/0.0474	50	1.099	0.830	0.731	0.602	1824	1502	4069
16/16	5.6	0.0598/0.0598	50	1.165	0.877	0.742	0.643	1851	1604	4069

## Allowable Reactions at Supports Based on Web Crippling, $R_n/\Omega$ (lb/ft)

Deck Gage	Bearing Length of Webs											
	One-Flange Loading						Two-Flange Loading					
	End Bearing				Interior Bearing		End Bearing				Interior Bearing	
	1½"	2"	3"	4"	4"	6"	1½"	2"	3"	4"	4"	6"
20/XX	522	571	655	726	1098	1257	554	595	663	721	1342	1550
18/XX	879	959	1092	1205	1843	2095	1013	1082	1198	1296	2292	2631
16/XX	1354	1470	1666	1830	2825	3194	1654	1759	1936	2085	3554	4059

## Standard Features

- ASTM A653 SS GR50 Min., with G60
- Standard lengths – 6'-0" to 42'-0"
- IAPMO UES ER-0652 and UL Listed
- Tables conform to ANSI/SDI C-2017

## Optional Features

- Inquire regarding cost and lead times for:
  - Short Cuts < 6'-0"
  - Sheet Lengths > 42'-0"
  - Alternative metallic finishes
- Cellular Acoustical Versions

NOTICE: Design defects that could cause injury or death may result from relying on the information in this document without independent verification by a qualified professional. The information in this document is provided "AS IS". Nucor Corporation and its affiliates expressly disclaim: (i) any and all representations, warranties and conditions and (ii) all liability arising out of or related to this document and the information in it.