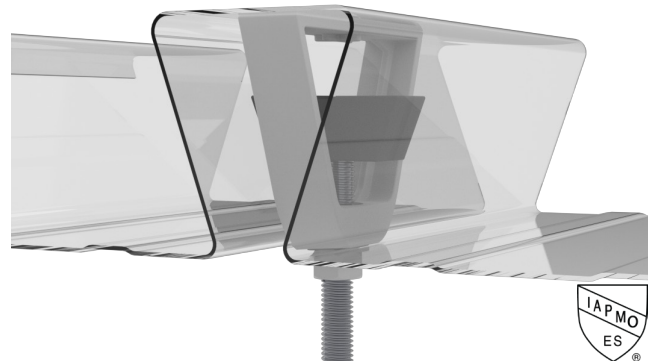


### Hang and Brace Loads from 3.5DS-24 FL / 3.5DF-24 FL Composite Deck-Slabs

#### PINTAIL™ ANCHOR

- IAPMO UES ER-0423
- 35PT3 compatible with 3/8" Threaded Rod
- 35PT4 compatible with 1/2" Threaded Rod
- 35PT5 compatible with 5/8" Threaded Rod



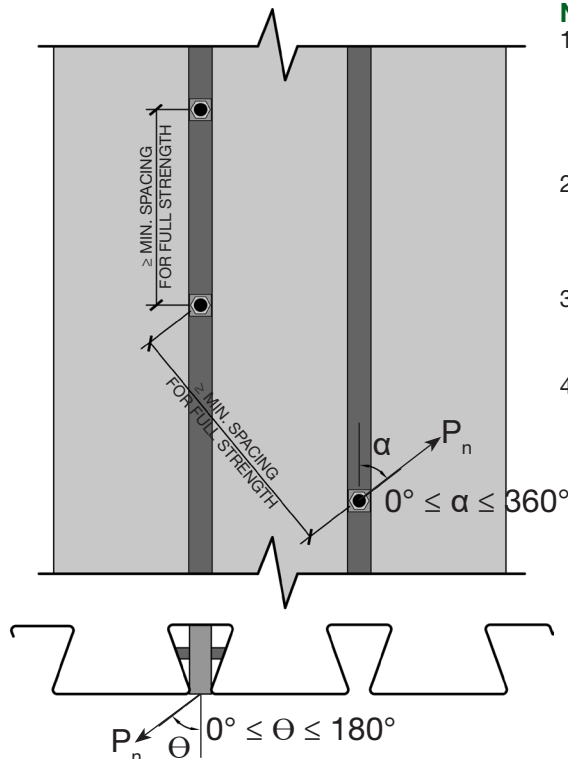
$\Omega=2.75$  UNO

Part Number	Concrete Type	Allowable Load In Any Direction $P_n / \Omega$ (lbs) $0^\circ \leq \alpha \leq 360^\circ$ ; $0^\circ \leq \theta \leq 180^\circ$				Allowable Vertical Hanging Load $P_n / \Omega$ (lbs) $\alpha = n/a$ ; $\theta = 0^\circ$			
		Spacing (in.)				Spacing (in.)			
		4 3/16	12	24	$\geq 34$ 3/8*	4 3/16	12	24	$\geq 34$ 3/8*
35PT3	Normal Weight	579	676	825	954	2045	2062 <sup>+</sup>	2062 <sup>+</sup>	2062 <sup>+</sup>
35PT4		579	676	825	954	2045	2389	2915	3370
35PT5		579	676	825	954	2045	2389	2915	3370
35PT3	Light Weight	479	560	683	790	1694	1979	2062 <sup>+</sup>	2062 <sup>+</sup>
35PT4		479	560	683	790	1694	1979	2414	2791
35PT5		479	560	683	790	1694	1979	2414	2791

\*Minimum spacing for full strength. The minimum spacing applies to Pintail Anchors in the same or adjacent flute.

NW:  $f'_c = 4000$  psi (min.) & 150 lb/ft<sup>3</sup> (min.) LW:  $f'_c = 3000$  psi (min.) & 110 lb/ft<sup>3</sup> (min.)

<sup>+</sup> $\Omega = 2.0$



#### Notes:

1. Basis of tabulated values is IAPMO Report ER-0423 and Vulcraft's Pintail Anchor online design tool. Allowable Loads In Any Direction table shows maximum load that can be applied in any horizontal, diagonal, or downward direction. Allowable Vertical Hanging Load table shows maximum load that can be hung with no allowance for horizontal capacity.
2. The strength of the Dovetail FL composite steel deck-slab, PinTail anchor, threaded rod or bolt, and other connecting hardware shall be equal or greater than the governing load combination as stipulated in the IBC or ASCE/SEI 7 including the fire sprinkler system loading.
3. The effect of connection spacing interaction, between the PinTail anchors and any other connections to the composite steel-deck slab shall be considered.
4. PinTail anchors shall be installed and inspected in accordance with manufacturer's instructions.

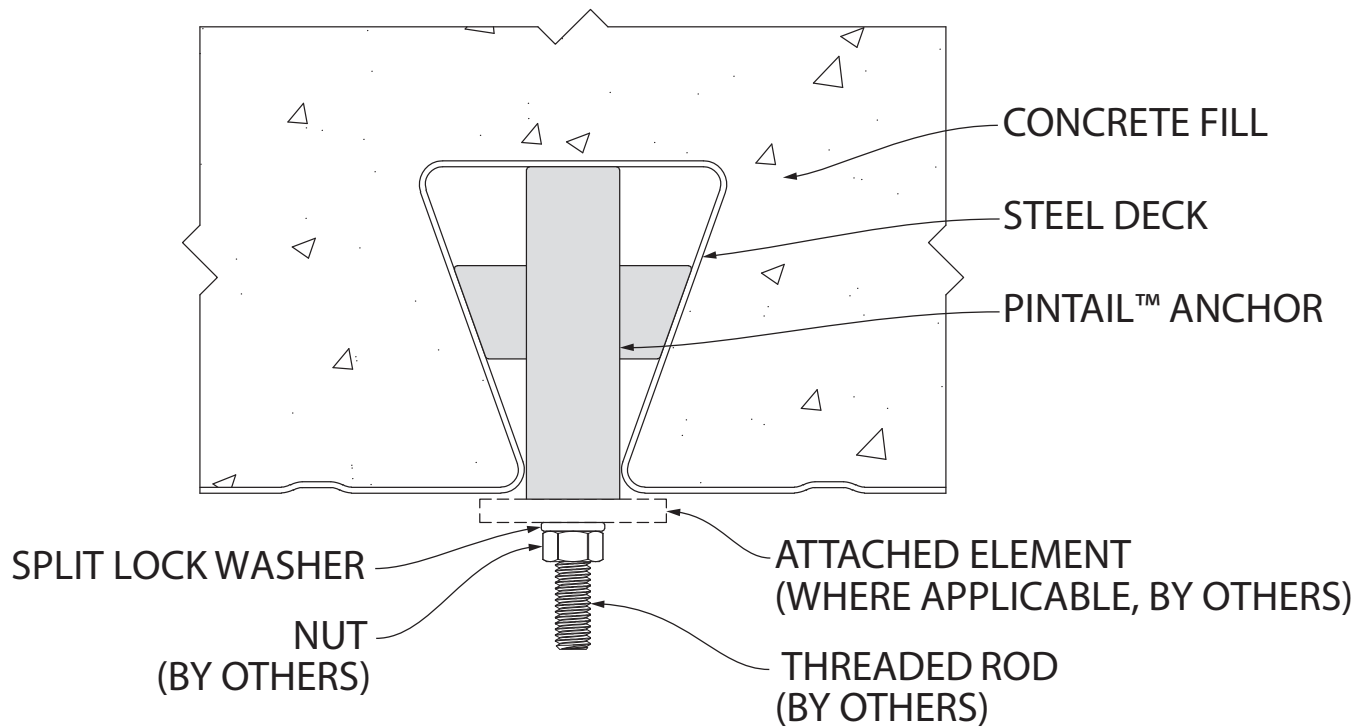


Custom values for specific conditions can be calculated using Vulcraft's Pintail Anchor online tool at [vulcraft.com/resources/designtools](https://vulcraft.com/resources/designtools).

**Designing fire sprinkler supports?** Our online design tool helps you quickly calculate the maximum permitted sprinkler pipe size in accordance with NFPA 13.

# PINTAIL™ ANCHOR

## INSTALLATION INSTRUCTIONS



### INSTALLATION:

1. Ensure deck rib is free of foreign material.
2. Insert threaded rod into PinTail™ anchor and thread into wedgenut.
3. Insert PinTail™ anchor into steel deck.
4. Push in threaded rod and rotate wedgenut 90 degrees.
5. Release threaded rod to seat the wedgenut against the webs of steel deck.
6. Attach element (where applicable) followed by split lock washer and nut.
7. Tighten nut until split lock washer is fully compressed.

